

Esa Arco pole 120

Product code: EAP120



Flange
EAP120_F



Foundation
EAP120_M

Conical steel hot rolling pole, prepared for Esa Arco pole arm installation. The pole is equipped with an M12 screw, steel inox AISI 304 (grounding).

Conformity



Geometry and mechanical features

- Total height: 13.600 mm
- Total weight: flange: 143 Kg
 foundation: 146 Kg

Materials | Color

- Core: Rolled steel | UNI EN 10219 - EN 573-3
- Top: Die cast aluminium | EN1706
- Color: Light grey

Terminal block 4x16mm²

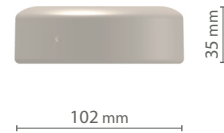
Smooth fitting door



Tops

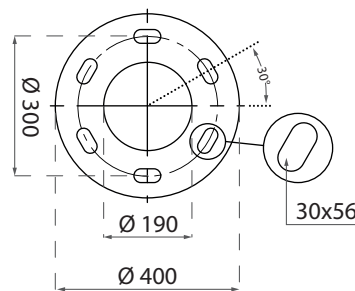
Standard

S

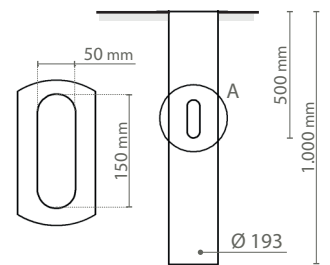


Fixing type

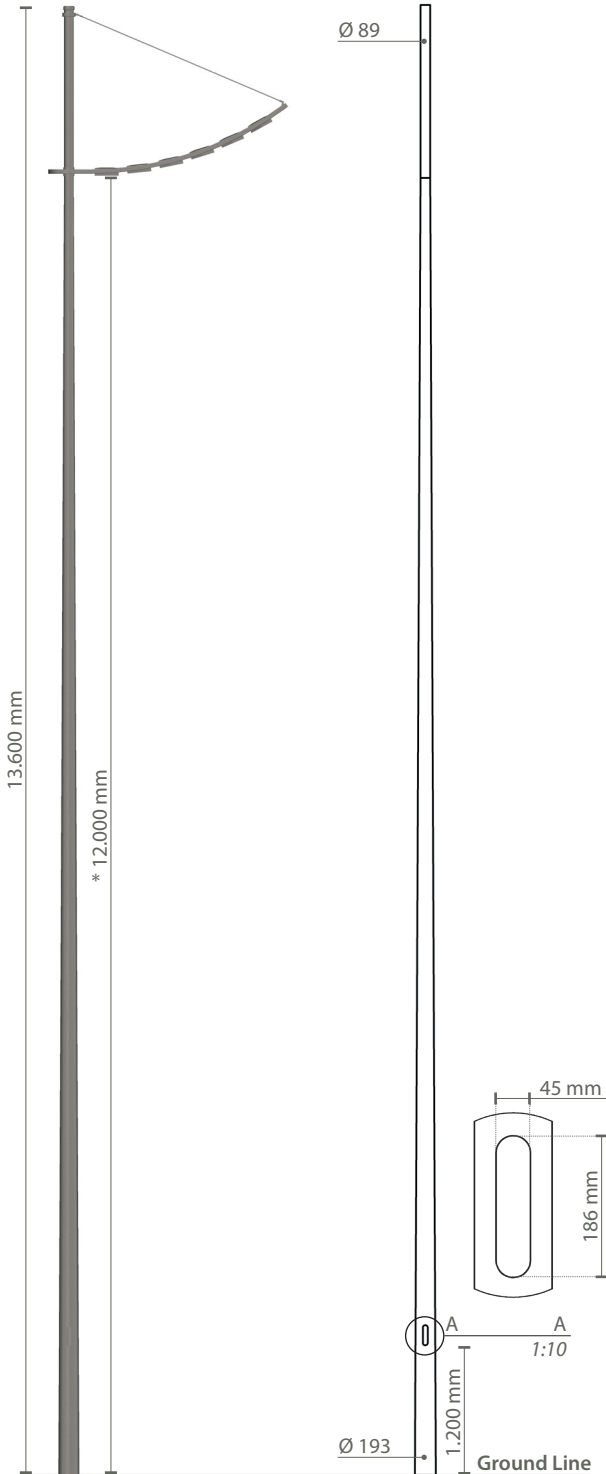
Flange



Foundation



In dotazione:
guaina protettiva termorestringente

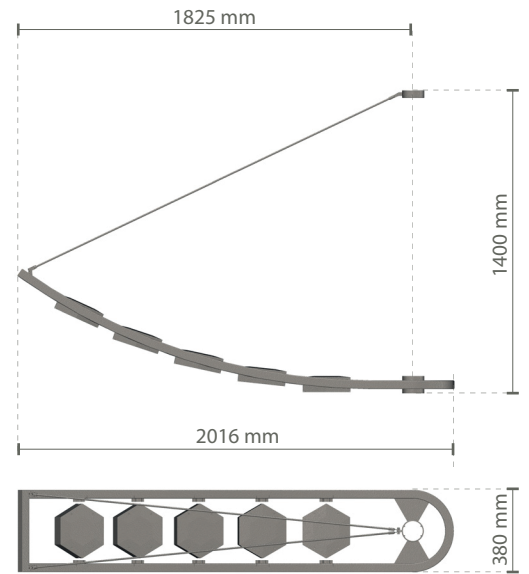
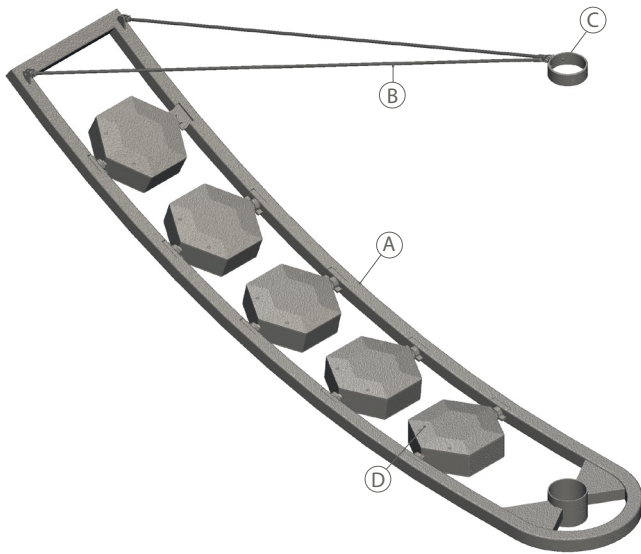


Scale: 1:70

* reference to pole arm EAM06

Esa Arco pole arm

Product code: EAM05



Scale: 1:35

Pole arm in steel prepared for the installation of 4 or 5 Esa luminous modules. Esa modules can be individually adjusted 360° thanks to the special joint. The shelf can be installed on a pole of 8, 10 or 12 meters. Available in single, double or quadruple version.

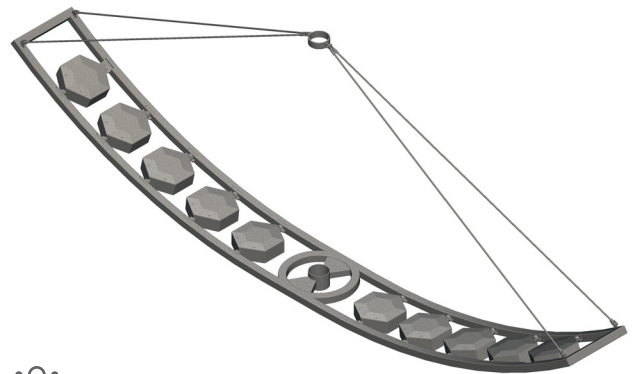
Geometry and mechanical features (*)

Height:	1400 mm
Width:	380 mm
Length:	2016 mm
Extension:	1825 mm
Weight (pole arm and luminous modules):	33 Kg

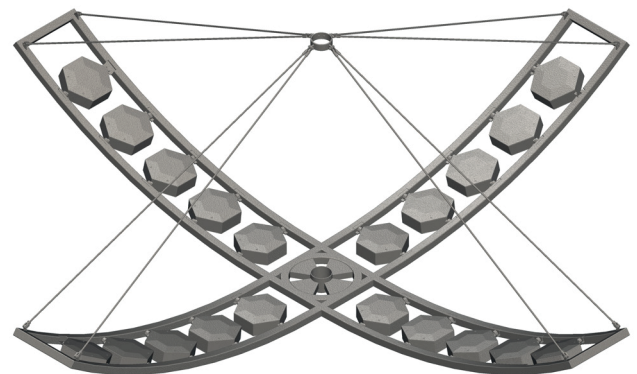
(*): Referred to single version

Materials | Color

Bracket (A):	S235 steel EN 10083-1
Suspension cable (B):	AISI 304 stainless steel
Pole collar (C):	AISI 304 stainless steel
Lighting fixture (D):	• Die cast aluminium EN 1706 • Extruded aluminium EN 573-3
Screws and bolts:	AISI 304 stainless steel
Color:	Light grey



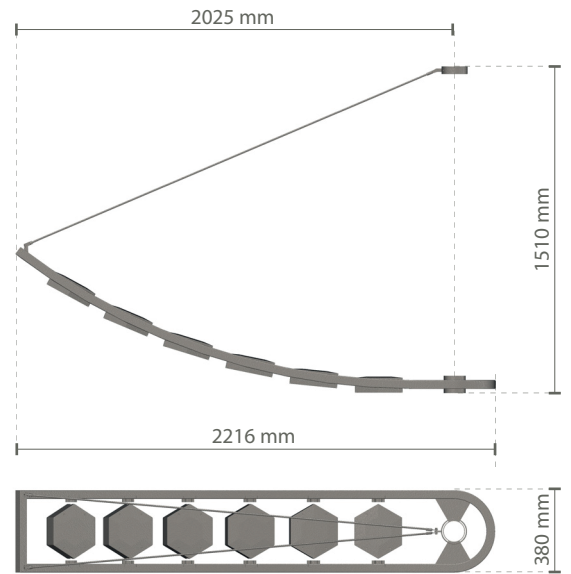
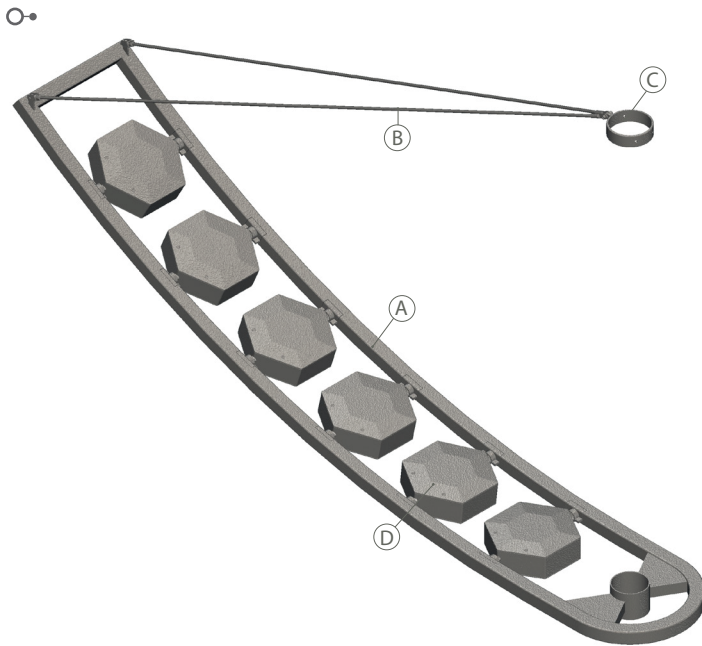
Weight (pole arm and luminous modules): 67 Kg



Weight (pole arm and luminous modules): 133 Kg

Esa Arco pole arm

Product code: EAM06



Scale: 1:35

Pole arm in steel prepared for the installation of 5 or 6 Esa luminous modules. Esa modules can be individually adjusted 360° thanks to the special joint. The shelf can be installed on a pole of 10 or 12 meters. Available in single, double or quadruple version.

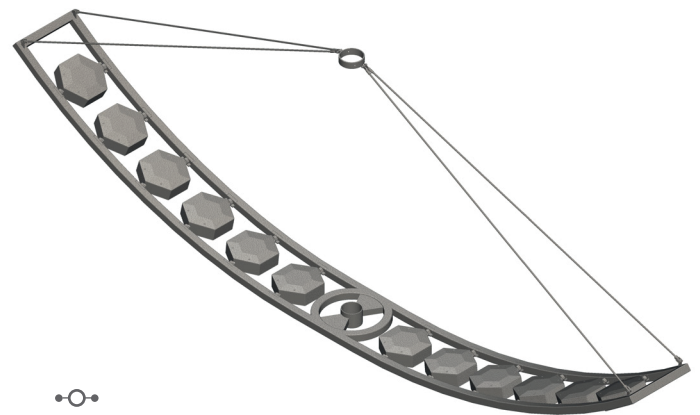
Geometry and mechanical features (*)

Height:	1510 mm
Width:	380 mm
Length:	2216 mm
Extension:	2025 mm
Weight (pole arm and luminous modules):	37 Kg

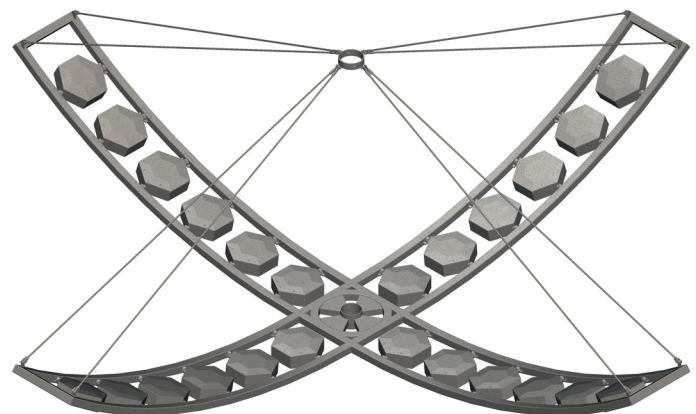
(*): Referred to single version

Materials | Color

Bracket (A):	S235 steel EN 10083-1
Suspension cable (B):	AISI 304 stainless steel
Pole collar (C):	AISI 304 stainless steel
Lighting fixture (D):	• Die cast aluminium EN 1706 • Extruded aluminium EN 573-3
Screws and bolts:	AISI 304 stainless steel
Color:	Light grey

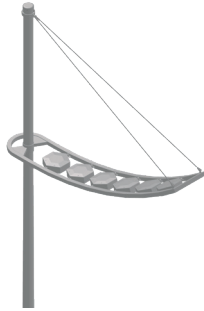


Weight (pole arm and luminous modules): 74 Kg



Weight (pole arm and luminous modules): 148 Kg

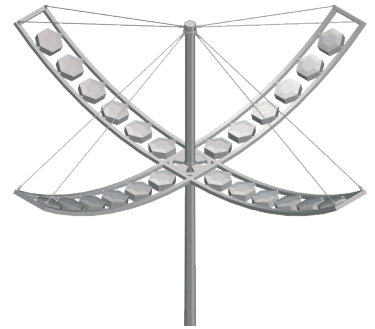
Composition code



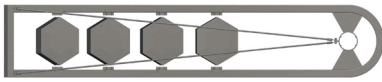
⊥ EAP120_F
⊕ EAP120_M



⊥ EAP120_F
⊕ EAP120_M



⊥ EAP120_F
⊕ EAP120_M

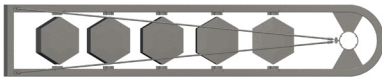


EAM05

⊥ EAP120_F_EAM05_01_04
⊕ EAP120_M_EAM05_01_04

⊥ EAP120_F_EAM05_02_04
⊕ EAP120_M_EAM05_02_04

⊥ EAP120_F_EAM05_04_04
⊕ EAP120_M_EAM05_04_04

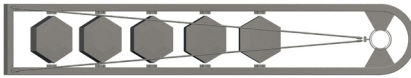


EAM05

⊥ EAP120_F_EAM05_01_05
⊕ EAP120_M_EAM05_01_05

⊥ EAP120_F_EAM05_02_05
⊕ EAP120_M_EAM05_02_05

⊥ EAP120_F_EAM05_04_05
⊕ EAP120_M_EAM05_04_05

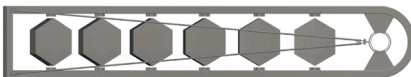


EAM06

⊥ EAP120_F_EAM06_01_05
⊕ EAP120_M_EAM06_01_05

⊥ EAP120_F_EAM06_02_05
⊕ EAP120_M_EAM06_02_05

⊥ EAP120_F_EAM06_04_05
⊕ EAP120_M_EAM06_04_05



EAM06

⊥ EAP120_F_EAM06_01_06
⊕ EAP120_M_EAM06_01_06

⊥ EAP120_F_EAM06_02_06
⊕ EAP120_M_EAM06_02_06

⊥ EAP120_F_EAM06_04_06
⊕ EAP120_M_EAM06_04_06

Protection cycles

GALVANIZED STEEL

Protection of galvanized steel surfaces for poles

The protection of galvanized steel elements is achieved by following steps:

- Micro sandblasting
- First epoxy layer application followed by: Wilting > Drying > Cooling
- Acrylic glaze layer application followed by: Wilting > Drying > Cooling
- Packing at least after 24-hour-drying at room temperature.

Protection of galvanized steel surfaces for brackets and pastorals

The protection of the galvanized steel elements is achieved thanks to:

- Micro sandblasting
- Phosphoric pickling bath at a ph level ranging from 1.5 to 3
- Rinsing with demineralised water
- First powder layer application
- Kiln firing
- Application of a final powder layer
- Kiln roasting of the final powder layer at 180°
- Cooling.

CAST IRON

Protection of cast iron surfaces for bases

The protection of cast iron elements is achieved by the following treatments:

- Surface micro shotblasting
- Mono-component dip galvanizing followed by: Wilting > Drying > Cooling
- Epoxy micaceous primer application followed by: Wilting > Drying > Cooling
- Acrylic enamel application followed by: Wilting > Drying > Cooling.
- Packing at least after 24-hour-drying at room temperature.

DIE-CAST ALUMINIUM

Protection of die-cast aluminium surfaces for lighting fixtures, tops, collars, brackets and pastorals

Brackets, pastoral, and die-cast accessories undergo a cycle of powder painting which creates a barrier against the corrosion of metal parts. Moreover this barrier makes the finished product comply with design specifications in terms of surface roughness, color and reflectance. The cycle consists of the following steps:

- Micro sandblasting
- Hot pickling bath in a zinc-based phosphodegreasing solution
- Phospho-chromatation for surfeces clearing
- Washing with water
- Rinsing with demineralised water and subsequent drying
- First powder layer application followed by kiln baking at 180°
- Final powder layer application using a High Durability product and final kiln roasting at 180°C.



Salt spray test | FLORIDA TEST

The top quality of such treatments is confirmed by the succesfull results of specific salt spray test (all products exceed widely 2.500 hours) and the strictest international tests, among which FLORIDA TEST.

The salt spray test is made in accordance with standard UNI EN ISO 9227.



GMR ENLIGHTS s.r.l

Legal headquarters:
Strada Provinciale Specchia - Alessano, 68 - 73040 (LE)

Administrative and operational headquarters:
Via Grande n°226 - 47032 Bertinoro (FC)

T +39 0543 462611
F +39 0543 449111

sales@gmrenlights.com
www.gmrenlights.com